

Employment and Workforce Profile

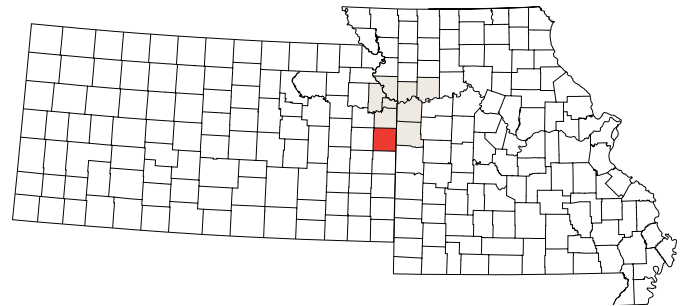
Miami County, Kansas

June 2016



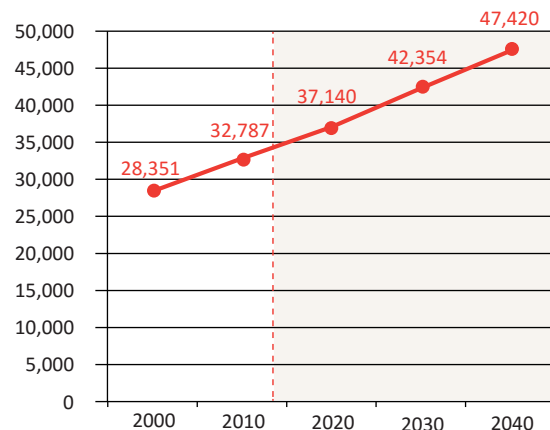
CONTACT

Janet McRae
Miami County Economic Development Director
201 S. Pearl, Suite 202
Paola, KS 66071
Phone: 913-294-4045
Fax: 913-294-9163
jmcr@miamicountyks.org
ThinkMiamiCounty.com



2014 Population: 32,822
Median Household Income: \$60,622
Area: 590 square miles

Population Forecast



Sources: U.S. Census Bureau, MARC

MIAMI COUNTY EMPLOYMENT

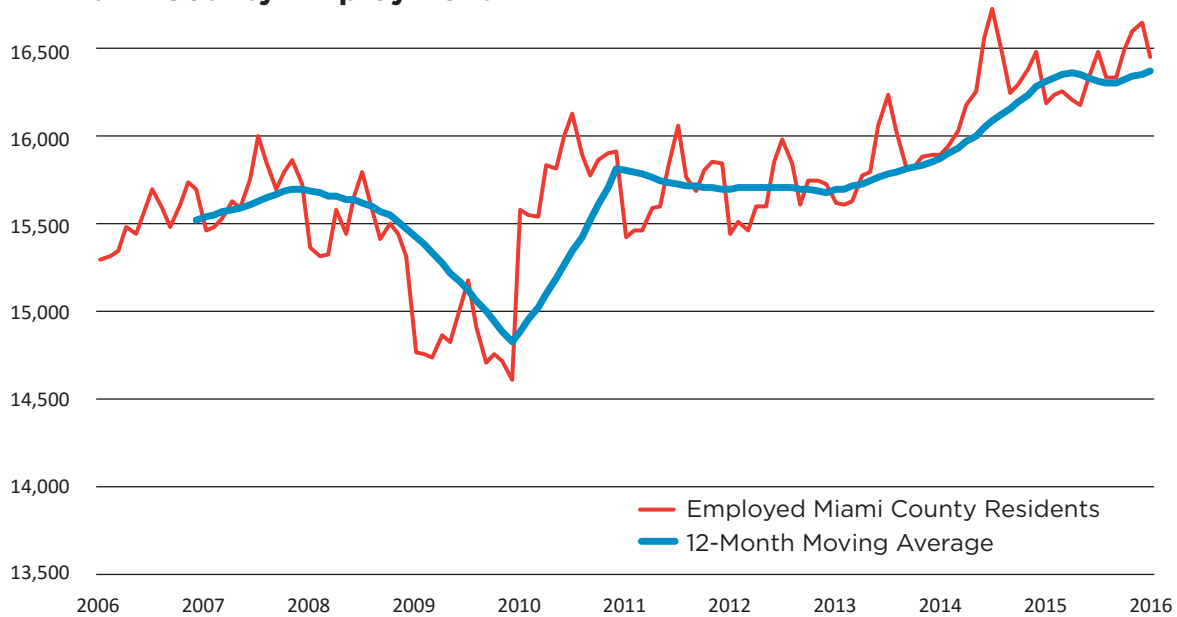
16,456
residents
employed
January 2016

5.3%
unemployment
rate
January 2016

\$60,622
median
household
income
2014

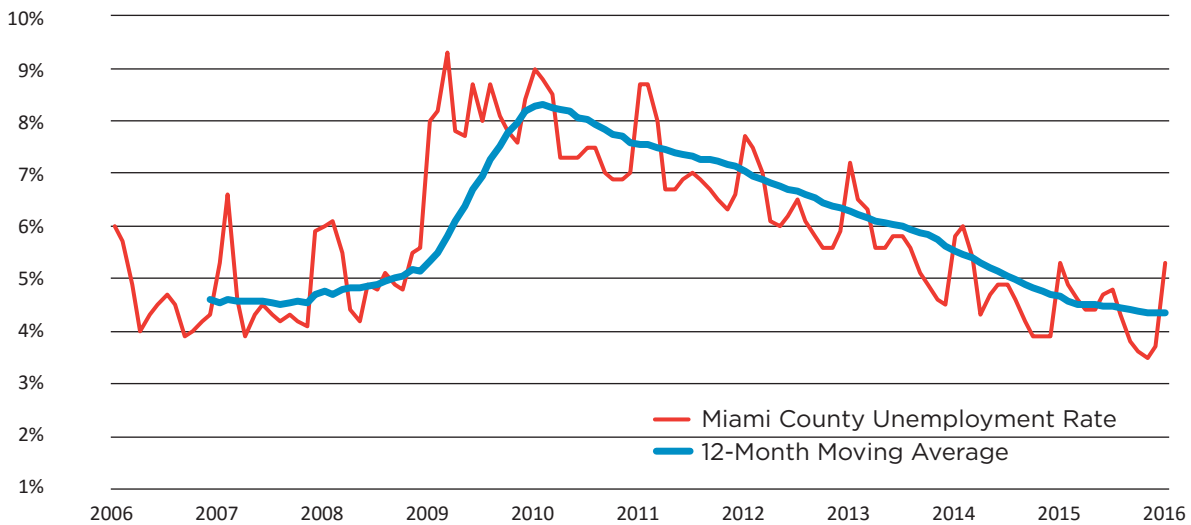
9,869
jobs in
county
2015 Q4

Miami County Employment



Sources: Bureau of Labor Statistics, LAUS

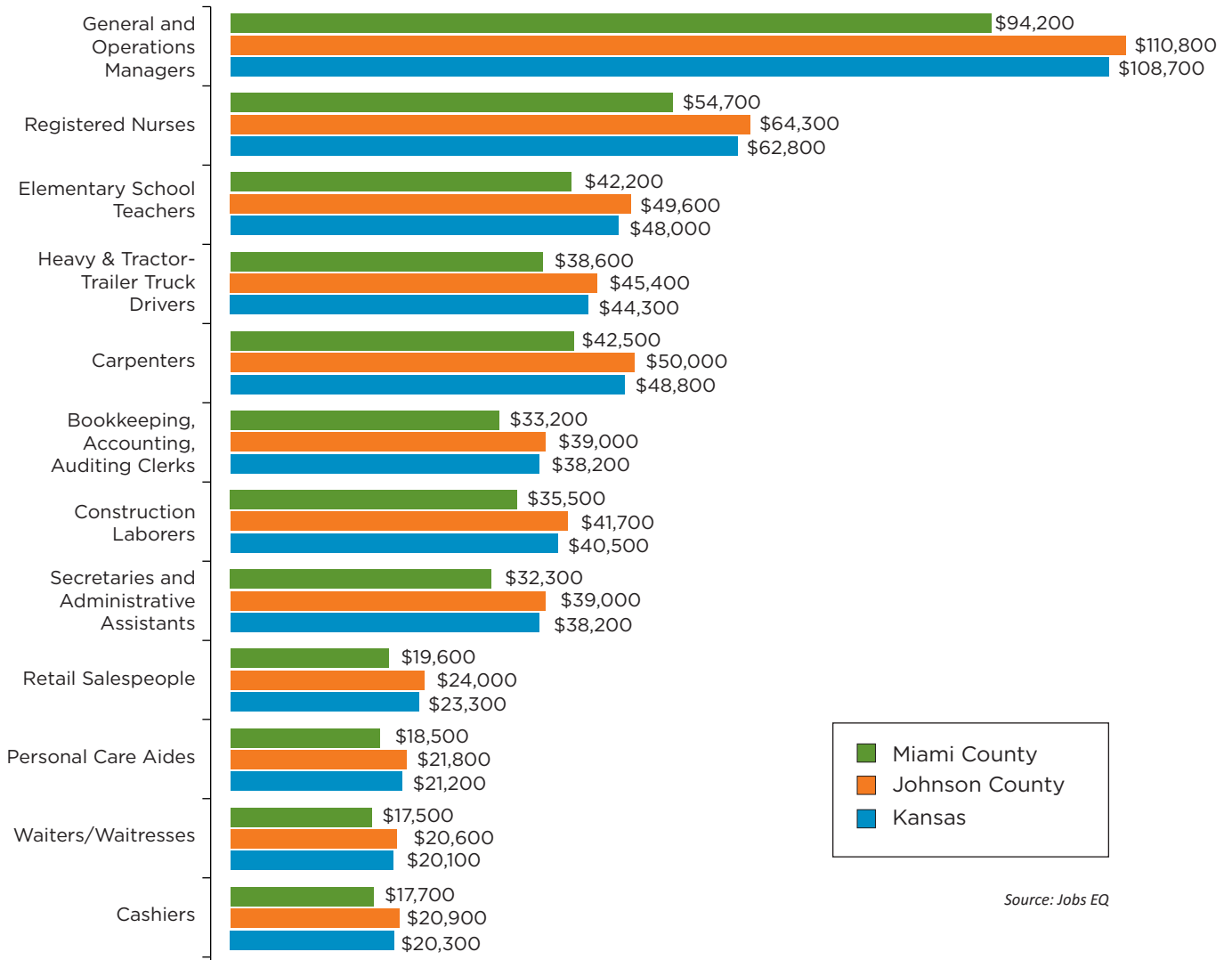
Miami County Unemployment Rate



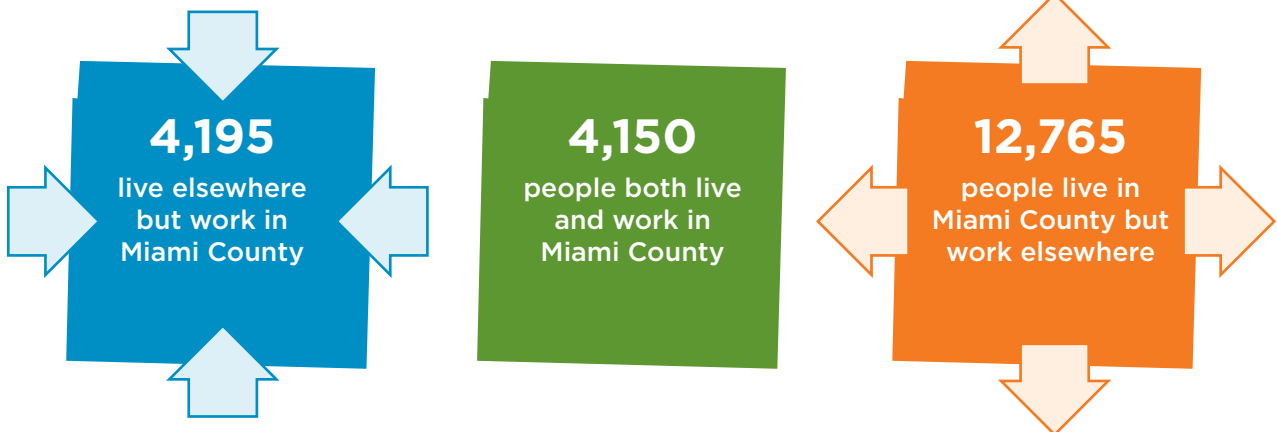
Sources: Bureau of Labor Statistics, LAUS

MIAMI COUNTY EMPLOYMENT

Annual Mean Wage Comparison



Commuting Patterns for Workers



Source: U.S. Census Bureau – LEHD Data

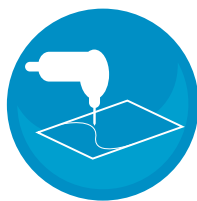
MIAMI COUNTY INDUSTRY

Employment by Industry

Industry	2015 Jobs	2015 Average Annual Earnings	Location Quotient
Health Care and Social Assistance	1,848	\$32,020	1.33
Educational Services	1,148	\$28,125	1.40
Retail Trade	1,056	\$24,718	0.98
Construction	880	\$44,651	1.65
Agriculture, Forestry, Fishing and Hunting	688	\$13,684	4.71
Accommodation and Food Services	657	\$13,969	0.76
Manufacturing	627	\$47,984	0.76
Public Administration	489	\$33,475	1.02
Other Services (except Public Administration)	467	\$21,405	1.06
Transportation and Warehousing	406	\$48,868	1.01
Professional, Scientific and Technical Services	326	\$52,977	0.51
Finance and Insurance	311	\$50,845	0.79
Administrative/Support and Waste Management	288	\$36,595	0.45
Wholesale Trade	235	\$46,248	0.59
Real Estate and Rental and Leasing	167	\$37,167	1.00
Arts, Entertainment and Recreation	95	\$13,316	0.49
Mining, Quarrying and Oil and Gas Extraction	79	\$45,981	1.55
Other	110	\$39,321	0.28

Source: Jobs EQ

Industries of Opportunity | The location quotient for a particular industry compares the number of jobs to total jobs to calculate percentages, both for Miami County and for the nation, then divides the county percentage by the national percentage. A location quotient greater than one indicates an industry of specialization or concentration. Miami County has a specialization (measured by location quotient) in the three industries below. The data below shows current employment, average annual wage and projected job growth for the Kansas City MSA. The regional growth in these industries may provide an opportunity for Miami County to expand its specialization.



**Fabricated Metal
Product Manufacturing**



**Nursing & Residential
Care Facilities**



**Heavy and Civil
Engineering Construction**

Current Employment	8,325	24,115	6,417
Average Annual Wage	\$54,281	\$27,808	\$59,909
Growth Demand, 2015-2025	-115	+5,338	+1,387
Replacement Demand, 2015-2025	+1,901	+5,177	+1,464

Source: Jobs EQ

MIAMI COUNTY INDUSTRY

Projected Employment by Industry

Industry	2015 Jobs	Forecast for Next 10 Years		
		Replacement Demand	Growth Demand	Ave. Ann. Growth
Health Care and Social Assistance	1,848	348	320	1.6%
Educational Services	1,148	228	58	0.5%
Retail Trade	1,056	332	48	0.4%
Construction	880	176	102	1.1%
Agriculture, Forestry, Fishing and Hunting	688	229	(62)	-0.9%
Accommodation and Food Services	657	227	27	0.4%
Manufacturing	627	138	(45)	-0.7%
Public Administration	483	115	(15)	-0.3%
Other Services (except Public Administration)	467	116	14	0.3%
Transportation and Warehousing	406	101	(2)	-0.1%
Professional, Scientific, and Technical Services	326	68	40	1.2%
Finance and Insurance	311	71	19	0.6%
Administrative and Waste Management	288	63	27	0.9%
Wholesale Trade	235	50	16	0.7%
Real Estate and Rental and Leasing	167	37	8	0.5%
Arts, Entertainment, and Recreation	95	29	6	0.6%
Mining, Quarrying, and Oil and Gas Extraction	79	19	3	0.4%
Other Industry	110	27	(4)	-0.4%
Total - All Industries	9,869	2,374	560	0.6%

Source: Jobs EQ and MARC

What Employers Want

JOB SKILLS IN DEMAND

Oral and written communication skills
Team-oriented, teamwork
Integrity
Problem solving
Marketing

CERTIFICATIONS IN DEMAND

Commercial Driver's License
Certified Registered Nurse
Licensed Practical Nurse
Certified Purchasing Manager
Certified Nursing Assistant

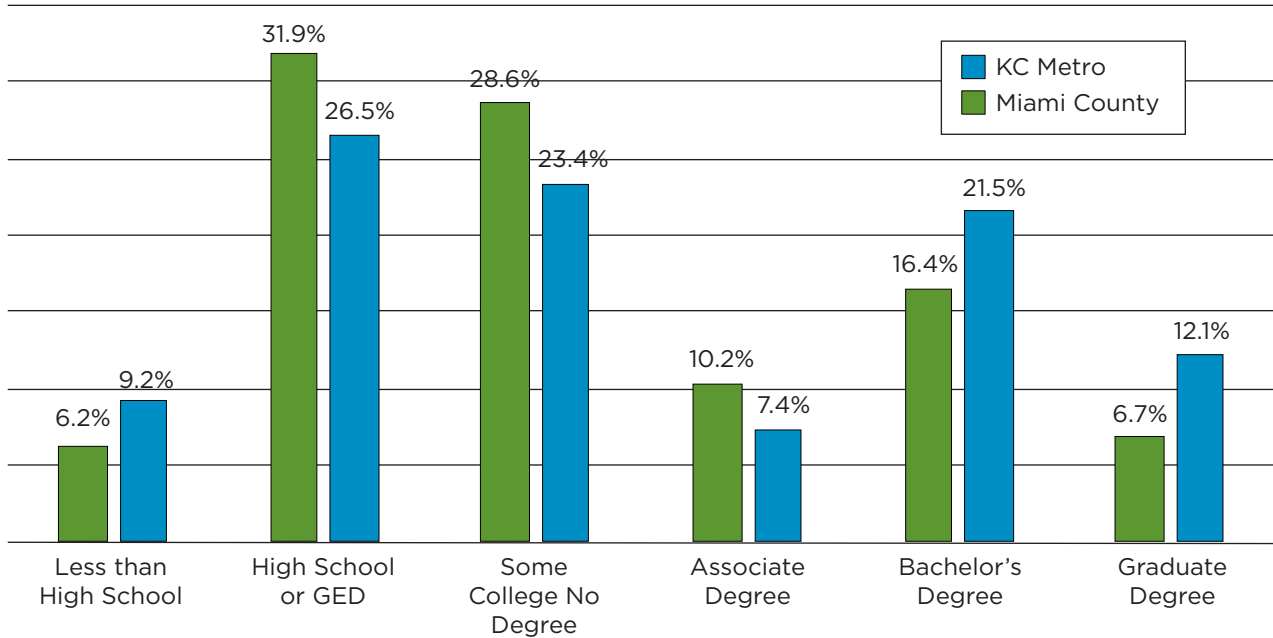
OCCUPATIONS IN DEMAND

Heavy and Tractor-Trailer Truck Drivers
Registered Nurses
Customer Service Representatives
Computer Occupations
Social and Human Service Assistants

Source: WANTED Analytics

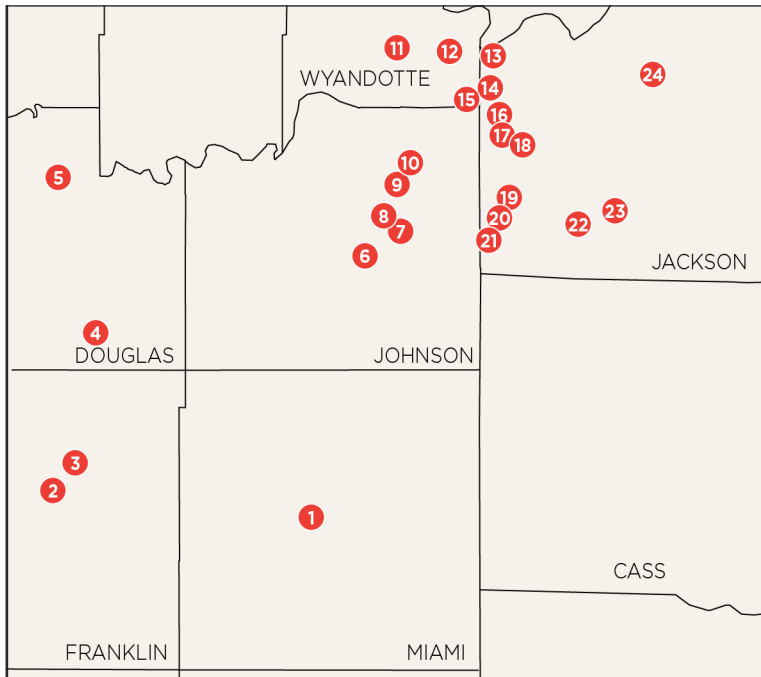
MIAMI COUNTY EDUCATION

Educational Attainment



Source: U.S. Census Bureau, American Community Survey

Education Resources



In County:

1. Fort Scott Community College

Neighboring Counties:

2. Ottawa University
3. Neosho County Community College
4. Baker University
5. University of Kansas
6. Mid-America Nazarene University
7. KU Edwards Campus
8. Johnson County Community College
9. Pittsburg State University
10. Friends University
11. Kansas City Kansas Community College
12. Donnelly College
13. Park University
14. MCC Penn Valley
15. KU Medical Center
16. Kansas City Art Institute
17. University of Missouri-Kansas City
18. Rockhurst University
19. University of Phoenix
20. DeVry University
21. Avila University
22. MCC Longview
23. University of Central Missouri
24. MCC Blue River



CONTACT

Janet McRae

Miami County Economic Development Director

201 S. Pearl, Suite 202

Paola, KS 66071

Phone: 913-294-4045

Fax: 913-294-9163

jmcræ@miamicountyks.org

ThinkMiamiCounty.com